

Interface **FLOR**

Circles

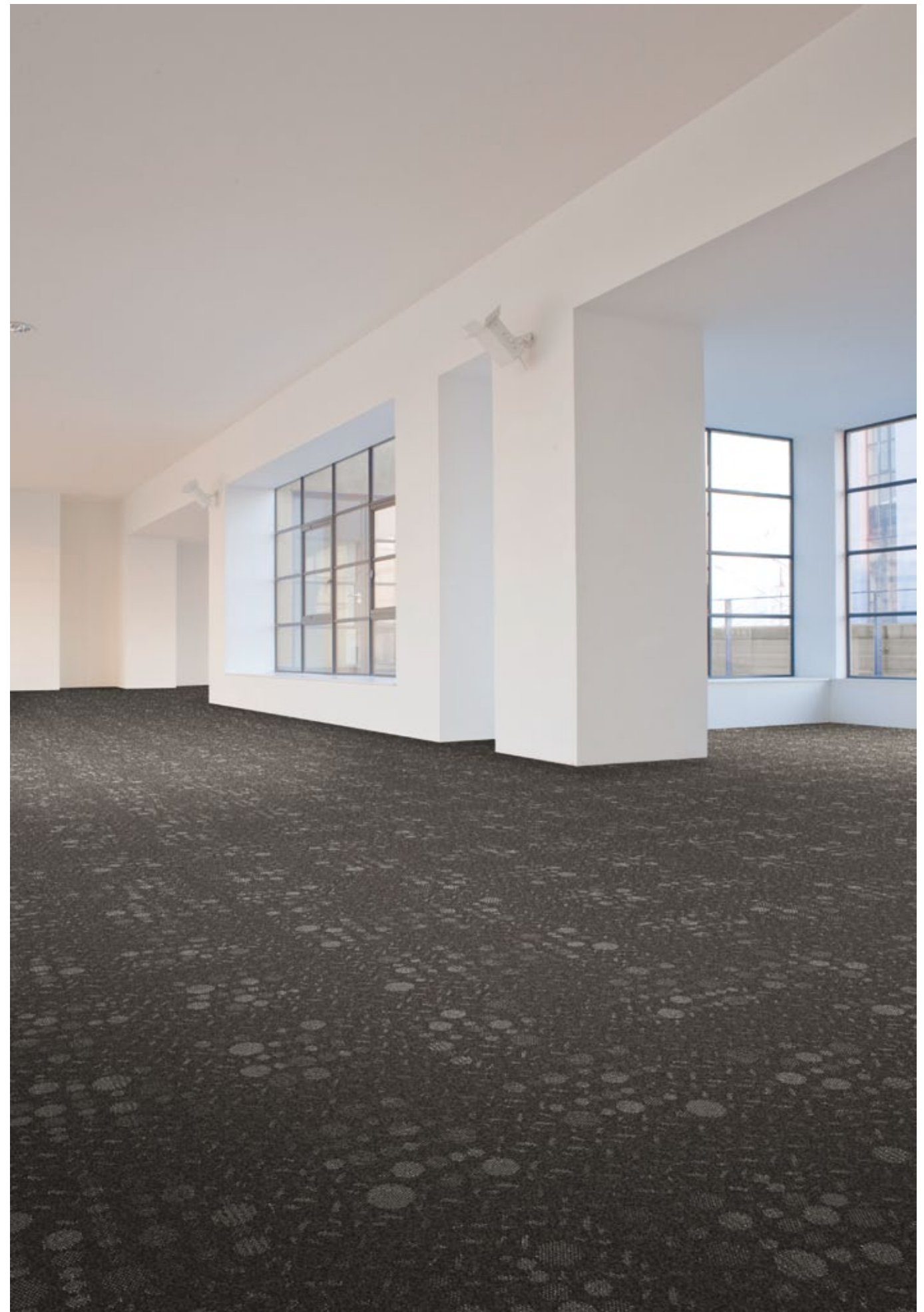




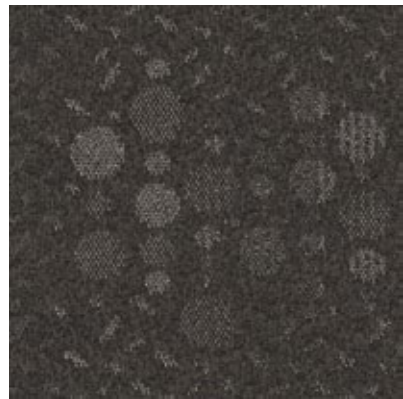




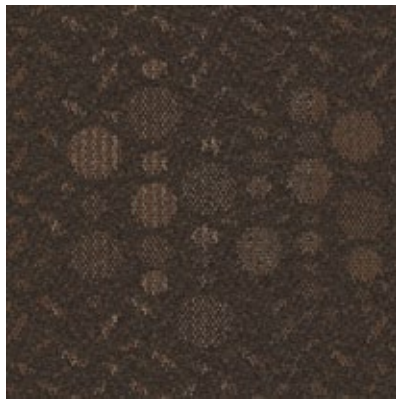
Product: Circles Colour: Radius 332112



Product: Circles Colour: Geometry 332115



Geometry 332115



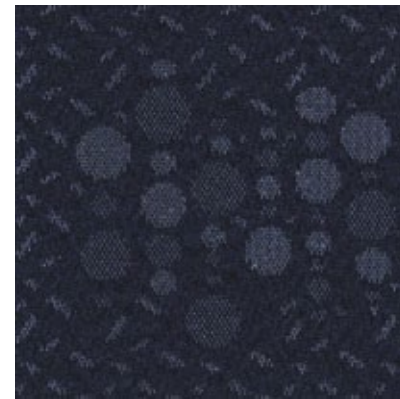
Axis 332116



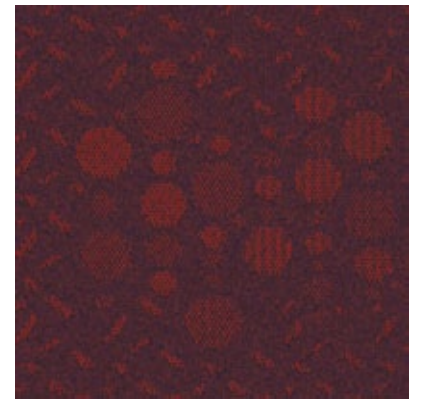
Radius 332112



Perimeter 332111



Diameter 332114



Tangent 332113

Environmental Data Sheet

EN

The Environmental Data Sheet has been developed to give a quick and fact-based overview of the main environmental impacts for each of the InterfaceFLOR products throughout all phases of their life cycle. It also highlights product features and services that help reduce the overall environmental impact. Furthermore, the data sheet lists how the product can help contribute towards major green building schemes and gives details about third party verification of the environmental claims made.

NL

Het Milieuinformatieblad is ontwikkeld om snel, een op feiten gebaseerde weergave te geven van de belangrijkste milieu-effecten van alle InterfaceFLOR producten tijdens de gehele levenscyclus. Het benadrukt de eigenschappen en diensten die bijdragen tot een vermindering van de totale milieu-impact. Bovendien verstrekt dit Milieuinformatieblad gegevens over de bijdrage van het desbetreffende product aan “green building” regelingen en geeft het informatie over verificatie door derden met betrekking tot milieueclaims.

DE

Anhand des ökologischen Datenblattes lassen sich alle InterfaceFLOR Produkte schnell und einfach hinsichtlich Ihrer Auswirkungen auf die Umwelt während des gesamten Lebenszyklus vergleichen. Zusätzliche Informationen zu besonderen Produkteigenschaften und möglichen Serviceangeboten geben Hinweise, wie die negativen Auswirkungen auf die Umwelt weiter reduziert werden können. Darüber hinaus finden sich Informationen, welchen Beitrag das spezifische Produkt bei einer Green Building Zertifizierung leisten kann und inwieweit die Angaben von einer unabhängigen dritten Partei geprüft wurden.

IT

La Scheda Dati Ambientali è stata sviluppata per fornire un quadro d’insieme rapido ed esaustivo dei maggiori impatti ambientali per ognuno dei prodotti InterfaceFLOR nell’arco di tutte le fasi del proprio ciclo di vita. Evidenzia, inoltre, le caratteristiche del prodotto e i programmi che contribuiscono a ridurre l’impatto ambientale complessivo. In aggiunta, la scheda indica come il prodotto può contribuire al soddisfacimento dei requisiti richiesti dai principali standard per la costruzione di edifici ambientalmente sostenibili e fornisce dettagli in merito alle verifiche, da parte di enti terzi, dei claim ambientali fatti.

FR

La fiche technique environnementale a été développée pour offrir une lecture rapide et factuelle des principaux impacts environnementaux de chacun des produits InterfaceFLOR, tenant compte de l’ensemble de leur cycle de vie. Elle met également en lumière les caractéristiques des produits ainsi que les services qui leur sont rattachés visant à réduire l’impact environnemental global. De plus, cette fiche explique comment le produit peut participer à la réalisation de bâtiments verts, et donne des détails sur les tierces parties ayant contrôlé les éléments communiqués.

ES

La ficha técnica medioambiental ha sido desarrollada para un rápido resumen basado en hechos de los principales impactos medioambientales para cada uno de los productos InterfaceFLOR a través de todas las fases de sus ciclos de vida. También resalta las características del producto y servicios que ayudan a reducir el impacto mediambiental global. Además, la ficha técnica indica cómo el producto puede contribuir a los principales sistemas de construcción verde y da detalles sobre la verificación realizada por terceros sobre las reivindicaciones ambientales.

Recycled Content		
Overall Recycled Content	43.6% Pre-Consumer recycled content out of total weight	
Yarn system	100% BCF Solution Dyed PA 6 Nylon, contains pre consumer recycled content 30.5% Pre-Consumer recycled content in the yarn on average Ranges from 3.3% to 48.1% subject to differences between colours	
Backing system	Graphlex® 61.0% of Pre-Consumer recycled content in the backing	
Carbon Footprint		
Estimated full life-cycle carbon footprint (using standardised method developed by GUT)	Raw materials and Production:	9.0 kg CO ₂ eq./m ²
	Delivery and installation:	0.5 kg CO ₂ eq./m ²
	Use (1 year):	0.2 kg CO ₂ eq./m ²
	End of life (waste to energy):	4.8 kg CO ₂ eq./m ²
	TOTAL (10 years' lifetime):	16.3 kg CO ₂ eq./m ²
CO ₂ compensation	Carbon neutral Cool Carpet® is standard	
Manufacturing		
Location	Shelf, UK Factory is certified ISO 14001 since 1996 and ISO 9001 since 1986	
Installation Impacts		
TacTiles	Optimised for glue-free installation with TacTiles connectors with virtually zero VOCs	
Installation Waste	In a typical installation* using the installation method below: Non Directional - 1-2% installation waste For reference: 2 metre wide broadloom typically generates 7-10 % installation waste * <i>In a rectangular building, installed before walls.</i>	
End-of-life		
Alternatives to landfill	Reuse: Can be cleaned and reused in a non-critical location to extend its useful life Recycling: Can be returned through the InterfaceFLOR ReEntry scheme and be re-used as raw material in new carpet tiles Waste-to-Energy: Can be incinerated in appropriate waste to energy plant	
Indoor Air Quality		
GuT (Gemeinschaft umweltfreundlicher Teppichboden)	The product passes all requirements of GuT's testing criteria regarding hazardous substances, emissions and odour. Certificate applied for.	
CRI (Carpet & Rug Institute)	Compliant to the requirements of the Green Label Plus programme.	
Compliance to Green Building Schemes		
BREEAM (UK and international)	Potential contribution to following categories and credits: VOCs – Adhesives and carpet Materials Specifications	
LEED (US and international)	Potential direct or indirect contribution to following categories and credits: Indoor Environmental Quality Credit 4.1 Low Emitting Materials: Adhesive & Sealants Credit 4.3 Low Emitting Materials: Carpet Systems Materials and Resources Credit 4.1 Recycled content Credit 5.1 Regional Materials Credit 2.1 Construction Waste Management Innovation and Design Credit 1 Climate Neutral Products	
HQE (FR)	Potential direct or indirect contribution to several points within following targets: 2. Integrated choice of products and construction materials 3. Low site nuisance 5. Management of water 9. Acoustic comfort 10. Visual comfort 11. No unpleasant smells 12. Sanitary quality of areas 13. Sanitary air quality	
DGNB (D)	Potential direct or indirect contribution to following criterion Criterion 06 - Risks for the local environment Criterion 16 - Life-cycle costs related to the building Criterion 20 - Indoor hygiene Criterion 21 - Acoustic comfort Criterion 28 - Conversion ability Criterion 40 - Ease of cleaning and maintenance of the structure Criterion 42 - Deconstruction, recycling friendliness, friendliness of disassembly	
Type III Environmental Declaration		
EPD according to ISO 14025	This product has a type III generic Environmental Product Declaration, no. EPD-GUT-2009111-E The full EPD can be obtained at www.bau-umwelt.com under floor coverings	

InterfaceFLOR Circles

Product Definition

Konstruktión Tufted Patterned Structured Loop Tile
Descripción Tuftgemusterte strukturierte Schlingenqualität
Description Moqueta modular tufting bucle estructurado con diseño
Type Dalle de moquette à velours tufté bouclé structuré à motifs
Descrizione Getuftete gedessineerde gestructureerde bouclé
Descrizione Bouclé tufted strutturato

Pile Material

Polfasermaterial 100% BCF Solution Dyed Nylon contains pre-consumer recycled content
Composición Fibra 100% Poliamida BCF tintada en masa con contenido reciclado pre-consumo
Composition 100% Poyamide BCF Teint en masse contenant des éléments recyclés pré-consumation
Poolmateriala 100% Solution Dyed Polyamide BCF, bevat pre-consumer gerecycled content
Fibra 100% Poliammide BCF tinta in massa con contenuto riciclato pre-consumer

Pile Yarn Weight

Poleinsatzgewicht 812g/m² ± 5%
Peso Fibra
Poids de fibre
Poolinzetgewicht
Peso Felpa

Total Weight

Gesamtgewicht 5165g/m² ± 5%
Peso Total
Poids total
Totaalgewicht
Peso Totale

Pile Height

Polschichtdicke 4.4 ± 0.3 mm
Altura Fibra
Hauteur de la fibre
Poolhoogte
Altezza Felpa

Total Thickness

Gesamtdicke 8.5 mm ± 0.5 mm
Espesor Total
Epaisseur totale
Totale dikte
Altezza Totale

Gauge/Ends 10 cm

Teilung x 10 cm 1/12 - 47.2
Galga x 10 cm
Jauge
Rijen per 10 cm
Serraggio x 10 cm

Tufts per m²

Noppenzahl/m² 179,360 ± 5%
Puntadas m²
Densité du tuft par m²
Aantal noppen per m²
Densità Punti

Backing Type

Rückenkonstruktion Graphlex®
Soporte
Sous-couche
Ruguitvoering
Sottofondo

Base Style Number

33211

Wear Classification

Beanspruchungs-/Komfort-Klasse
Clasificación al tráfico
Clasement
Gebruiksintensiteit
Resistenza all'usura

Heavy Contract (EN 1307 - Class 33)
 Heavy Contract Class 33/LC2 (EN1307)
 Tráfico muy intenso
 Usage professionnel intensif
 Extreem
 Idoneo per contract massima usura

Radiant Panel

Schwerentflammbarkeit

(EN ISO 9239/1)
 Euroclass Cfl s1 (EN ISO 13501)

Hot Metal Nut

Pass, low radius of effects of ignition (BS 4790)

Castor Chair Rating

Stuhllrollenprüfung
Resistencia a sillas con ruedas
Comportement sous chaise à roulettes
Rolstoelgeschikt
Test sedia a rotelle

≥ 2,4 (EN 985)

Dimensional Stability

Dimensionsstabilität
Estabilidad Dimensional
Stabilité dimensionnelle
Dimensionele stabiliteit
Test Stabilità dimensionale

≤ 0,2% (ISO 2551/EN 986)

Vertical Electrical Resistance

Durchgangswiderstand
Resistencia vertical
Résistance verticale à 25% d'humidité
Doorlaatweerstand
Resistenza elettrica verticale

5 x 10⁵ Ω > < 2 x 10¹⁰ Ω (IBM) Computerguard permanent antistatisch, ableitfähig (ISO 10965)

Colour Fastness - Light

Lichtechtheit
Solidez Color
Solidité des Coloris à la lumière
Kleurechtheden - Licht
Solidità a Luce

6 (ISO 105/B02)

Tiles per Box

Fliesen/Karton
No Losetas por caja
Nombre de dalles par boîte
Aantal tegels per doos
Imballo

16 - 4m² (50 x 50 cm ± 0.15%)

Sound Absorption

125Hz	250Hz	500Hz	1000Hz	2000Hz	4000Hz
0.02	0.03	0.12	0.27	0.35	0.45

Light Value*

	L	Y
332111 Perimeter	22.51	3.66
332112 Radius	27.03	5.1
332113 Tangent	23.15	3.84
332114 Diameter	23.35	3.9
332115 Geometry	30.39	6.39
332116 Axis	29.08	5.87

*Light Value

L Value = L according to CIE L*a*b* colour space, Y Value = Light Reflectance Value according to BS 8493

*Licht waarden

L Waarde = L volgens CIE L*a*b*kleurruimte, Y Waarde = Licht Reflectie Waarde volgens BS 8493

*Valeurs concernant la lumière

Valeur L = L faisant référence à la méthode CIE L*a*b* pour la couleur, Valeur Y = Valeurs de réflectance de la lumière selon le British Standard BS 8493

*Valores de Reflectancia de Luz

Valor L = L según CIE L*a*b* espacio de color, Valor Y = Valor de reflectancia de luz según el estándar británico BS 8493

*Indici di riflettanza alla luce

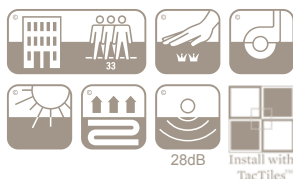
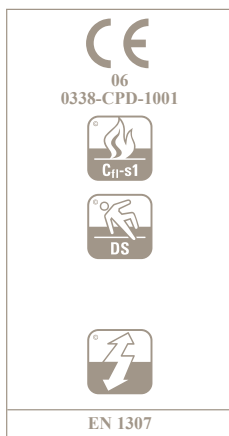
Indice L = L secondo CIE L*a*b* colour space, Indice Y = Indice di riflettanza alla luce secondo la norma BS 8493

*Lichtreflexionswerte

L-Wert = L gemäß CIE L*a*b* Farbspektrum, Y-Wert = Lichtreflexionswert gemäß British Standard BS 8493

Order your free samples on-line at www.interfaceflor.eu/circles

AE +971 4 368 778	FR +33 1 58 10 20 20	RO +40 21 317 12 40
A +41 44.913.68.00	HR +385 1 2315 027	/42/43/44
BA +387 33 522 534	HU +36 1 3 84 90 05	RS +381 11 212 9579
BE +32 2 475 27 27	IE +353 1 679 8466	RU +7 495 234 57 27
BG +359 2 808 303	IN +91 80 30589350	SA +966 1 4198000
BY +375 17 226 75 14	IT +39 02 890 93678	SE 020 801 801
CH +41 44/9136800	KZ +7 727 250 84 30	SK +421 244 454 323
CS +381 11 212 95 79	NL +31 33 2775800	SI +386 1 520 0500
CZ +42 0 233 087 111	MK +38 9 23 224 210	UA +38(04)238 27 67
DE +49 2151 3718 0	NO +47 23 12 01 70	UK +44 (0)1274 698503
DK +45 33 79 70 55	PL +48 (0) 22 862 44 69	ZA +27 11 6083324
ES +34 914 474 499	PT +35 217 122 740	



Interface Europe Ltd reserve the right to change or modify specifications
 Technische Änderungen vorbehalten
 Interface se reserva el derecho a modificar las especificaciones arriba referenciadas
 Interface Europe Ltd se réserve la possibilité de modifier les caractéristiques ci-dessus
 Technische wijzigingen, ter verbetering van het product, worden voorbehouden
 Interface si riserva il diritto di modificare le proprie specifiche tecniche senza preavviso

Printed on paper with 75% recycled content (minimum 20% post consumer)
 Druck auf Umweltpapier mit mind. 75% Recyclinganteil
 Impreso en papel con un 75% de contenido reciclado
 Imprimé sur du papier contenant 75% d'éléments recyclés
 Gedrukt op 75% gerecycled materiaal
 Stampato su carta con il 75% di contenuto riciclato (20% minimo di materiale post-consumer)

Manufactured in the United Kingdom.